



360 Main St.
Enterprise FL 32725
(386) 259-5900

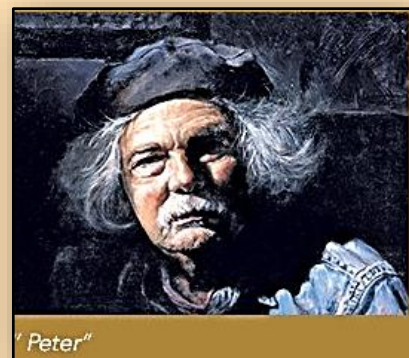
HOURS: Thurs, Fri & Sat 10am – 2pm
<https://www.OldEnterprise.org>

Visit us on Facebook for news & event updates:
<https://www.facebook.com/EnterpriseHeritageCenterAndMuseum>

August 3 thru September 30, 2022

The Art of John Gamache

John Gamache's early training was completed at the *Swain School of Design* in New Bedford MA and at *Southeastern Massachusetts University*. He spent many years working as a freelance illustrator and designer for advertising agencies, publishing companies, corporations and computer game companies.



"Peter"



"Monastere Lesna, 1, Reu du Moulin"

Within the last several years he has returned to show his personal works to the public. He considers his artistic schooling to have been "intensely" classical and acknowledges that the creating of art is intertwined with his life.

John works in a traditional style of painting but is unconventional in the application and type of surface materials he uses in some of his works. This merge of the two medias forms a synergy of unique visual appeal.



"Bear on Red Wheels"

His current body of work utilizes his style to create fascinating pieces reminiscent of his past artistic influences. His box pieces – tributes to artists whose works he grew viewing as a child – made a large impression on how he now views his emotional and creative links to the past. He currently enjoys living and working in St Augustine, Florida

No entrance fee however a donation to the Enterprise Museum is appreciated.



The Enterprise Museum is owned and operated by the Enterprise Preservation Society Inc, a 501(c)3 non-profit corporation, and is maintained by volunteers with help from your donations and various grants. 501(c)3 Reg.#CH24965

Come visit us and enjoy Enterprise: Yesteryear, Today, and Tomorrow.